

3 November 2015

New inquiry: New models of tertiary education

The Government has asked the Productivity Commission to investigate how trends in technology, internationalisation, population, tuition costs and demand for skills may drive changes in models of tertiary education.

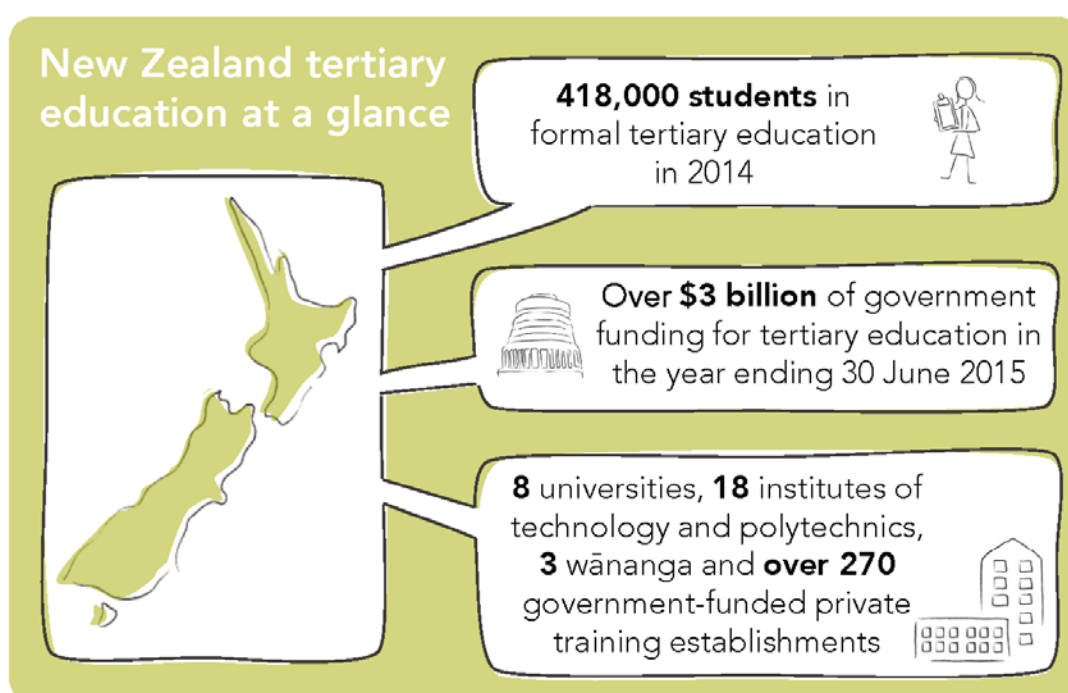
The inquiry follows on from the 2014 Innovations in Tertiary Education Delivery Summit, which considered emerging models of tertiary education provision and discussed challenges to shifting away from traditional models. The inquiry will consider how New Zealand's institutional and policy settings help or hinder the adoption of new models of tertiary education, as well as looking broadly across what new models there are or what might emerge.

"Tertiary education plays a big part in New Zealand communities society and the economy, with over 400,000 students a year enrolled, and involving annual government funding of around \$3 billion", said Commission Chair, Murray Sherwin.

"The Commission will consider the extent to which new models could improve the quality of tertiary education to the benefit of students, the economy and wider society, and improve access, participation and achievement in tertiary education. We will take a whole-of-system perspective, focussing on New Zealand's universities, polytechnics, wānanga and private tertiary providers and seeking input from a wide range of organisations and people with a stake in tertiary education here and overseas".

The Commission will begin the inquiry with the publication of an "issues paper" that will outline its proposed approach, the context for the inquiry and a list of key questions to be addressed. We expect the issues paper to be available in February 2016. The Commission will seek submissions from all interested parties and consult broadly to help inform and ground its analysis. Its final report to the Government is due on 28 February 2017.

The Commission seeks your assistance in gathering ideas, opinions and information to ensure the inquiry is well-informed and relevant. The Commission will keep registered participants informed as the inquiry progresses.



Sources: Ministry of Education and Tertiary Education Commission websites

About the New Zealand Productivity Commission

The Commission – an independent Crown entity – was established in April 2011 and completes in-depth inquiry reports on topics selected by the Government, carries out productivity-related research, and promotes understanding of productivity issues.

For further information, please contact Catherine Jeffcoat:

Catherine.Jeffcoat@productivity.govt.nz

T: (04) 903 5160

M: 029 770 8697

Web: www.productivity.govt.nz